

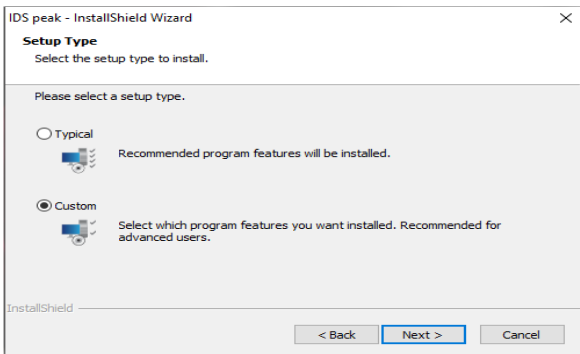
IMPORTANT: Before installing software, make sure you read the instructions and follow steps 1-4 in the User's Guide.

- 1 Unpack
- 2 Assemble Stand
- 3 Mount Head
- 4 Attach Lens
- 5 Install Software

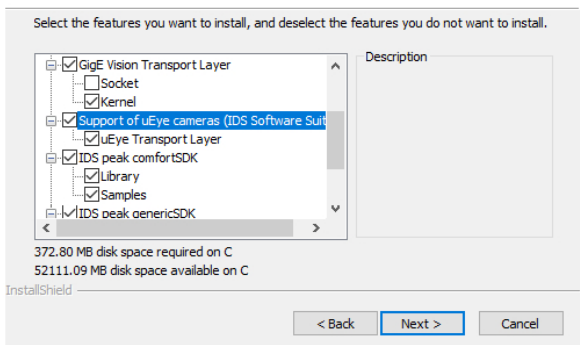
Min. Recommended System Specs:

Windows 10 (32/64-bit), Intel® Core i5 - 2.5 GHz, 4GB RAM / 200 GB HD


1. **Uninstall** any previous version of IDS uEye, Pylon and ViCapture software from your PC.
2. Do not plug MANTIS PIXO camera into the PC
3. **Install IDS Peak** – “ids_peak_2.1.0.0.exe”
 - Follow On-Screen Wizard
 - Select Setup type as Custom Install



- At “Select Features” window, select the option “**Support for the uEye cameras**”



- Complete the installation process and “**Restart the PC**”

4. **Install IDS Software Suite v4.951** or later – “uEye_49510.exe”
 - Complete the installation process and “**Restart the PC**”
5. **Install ViCapture v2.1** Software from provided USB thumb drive – “ViCaptureSetup.MSI”
 - Complete the installation process and “**Restart the PC**”
6. Connect the Mantis to a USB port on PC using the provided USB cable
 - Launch the ViCapture v2.1 software
 - Enter Supervisor mode, click the  button and enter the password. (Default password: Vision) and click OK.
 - Load Camera and Settings
 - Click on the ‘**Settings Tab**’
 - Camera** > From drop down select the camera
 - Settings** > From drop down select the correct settings file and Save
(To import the settings file - Click on Manage> Import> open the “ settings File” folder and select the file > Click on Save and Close > Open drop down in settings and select the saved settings file)
7. Mantis is now ready for use

